

TASMANIAN STATISTICAL INDICATORS

EMBARGO: 11:30AM (CANBERRA TIME) MON 9 OCT 2000

CONTENTS

	<i>page</i>
Notes	2
Main features	3
List of tables.	8

SUBJECT AREAS

1 Population and demography	9
2 Labour force	10
3 Wages and prices	18
4 Production	24
5 Primary industry	25
6 Building	29
7 Finance	30
8 Tourism	32
9 Transport	34
10 Retail trade.	35
11 Overseas trade	36
12 Australia and State comparisons.	38
13 Tasmanian Statistical Divisions comparisons.	40

ADDITIONAL INFORMATION

Map: Tasmanian Statistical Divisions.	42
---	----

- For further information about these and related statistics, contact the National Information Service on 1300 135 070 or Jackie Saarinen on Hobart 03 6222 5812.

NOTES

FORTHCOMING ISSUES

<i>ISSUE</i>	<i>RELEASE DATE</i>
November 2000	8 November 2000
December 2000	8 December 2000
January 2001	10 January 2001
February 2001	11 February 2001
March 2001	8 March 2001
April 2001	6 April 2001

INTRODUCTION

1 This publication contains latest figures for a comprehensive range of economic indicators. Statistics shown in this publication are the latest available at the date of preparation and may be subject to revision in subsequent issues. In a number of cases figures appearing in this publication are preliminary and are subject to revision in subsequent issues. Reference should therefore always be made to the latest issue or to the statistical publication on the specific subject.

SEASONAL ADJUSTMENT AND TREND ESTIMATION

2 Seasonal adjustment is a means of removing the estimated effects of normal seasonal variation from the series so that the effects of other influences on the series can be more clearly recognised. Seasonal adjustment does not aim to remove the irregular or non-seasonal influences which may be present in any particular month. This means that month-to-month movements of the seasonally adjusted estimates may not be reliable indicators of trend behaviour.

3 The smoothing of seasonally adjusted series reduces the impact of the irregular components of the seasonally adjusted series and creates trend estimates. These trend estimates are derived by applying a 13-term Henderson-weighted moving average to all months except the last six. The last six monthly trend estimates are obtained by applying surrogates of the Henderson average to the seasonally adjusted series.

4 While this smoothing technique enables estimates to be produced for the latest month, it does result in revisions to the most recent months as additional observations become available. Generally, subsequent revisions become smaller and after 3 months have a negligible impact on the series.

SYMBOLS AND OTHER USAGES

n.a.	not available
n.p.	not available for separate publication (but included in totals where applicable)
n.y.a.	not yet available
..	not applicable
—	nil or rounded to zero
p	preliminary—figure or series subject to revision
r	figure or series revised since previous issue

Stevan R. Matheson
Regional Director, Tasmania

MAIN FEATURES

THE LABOUR FORCE

Trend estimates There were an estimated 220,600 persons (based on trend estimates) in the labour force in August 2000 and an estimated 371,100 civilian Tasmanians aged 15 years or more, yielding a labour force participation rate of 59.5%. This compares with 58.6% in August 1999. The Australian labour force participation rate for August 2000 was 63.9%. This compares with 63.2% in August 1999 (see table 39 and *Labour Force, Australia, Preliminary* (Cat. no. 6202.0)).

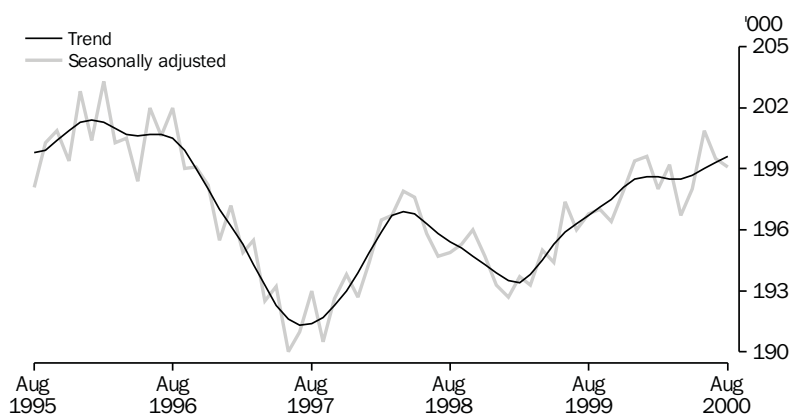
For Tasmanian males, the trend estimate of the participation rate was 68.5%, compared with 68.3% in August 1999. For Tasmanian females, the trend estimate of the participation rate was 51.0%, compared with 49.3% in August 1999 (see table 3).

EMPLOYMENT

State comparisons There was an increase of 1.5% in Tasmania's employment over the 12 months to August 2000. The largest percentage increase in employment was in New South Wales (4.2%), followed by Victoria (3.9%) and Queensland (3.4%). The increase in Australia's employment over the same period was 3.5% (see table 39 and *Labour Force, Australia, Preliminary* (Cat. no. 6202.0)).

Trend estimates

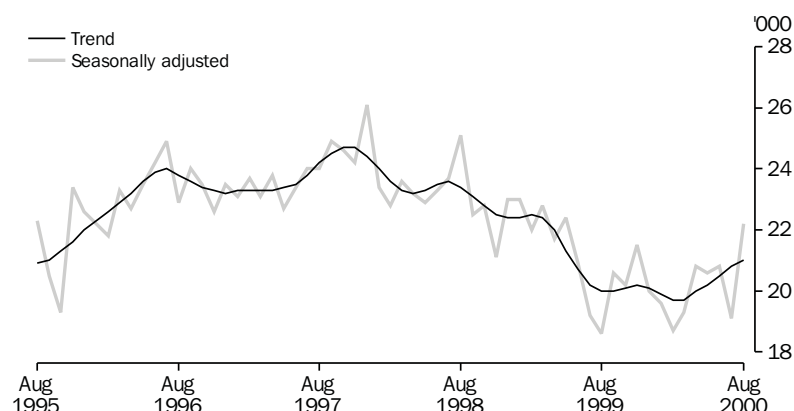
EMPLOYMENT



UNEMPLOYMENT

Trend estimates The trend estimate of the number of unemployed persons in Tasmania for August 2000 was 21,000. This compares with 20,000 in August 1999. The trend estimate of the unemployment rate of 9.5% in August 2000 compares with 9.2% in August 1999. The Australian trend estimate of the unemployment rate of 6.4% in August 2000 compares with 7.1% in August 1999 (see table 3 and 39, and *Labour Force, Australia, Preliminary* (Cat. no. 6202.0)).

UNEMPLOYMENT



HOUSE PRICE INDEX

The June quarter 2000 established house price index for Hobart rose 4.4% over the previous quarter, and 8.6% in annual terms. In the year to June quarter 2000, all capital cities recorded increases. Melbourne recorded the highest increase (13.7%) followed by Sydney (11.1%), while Brisbane recorded the lowest increase of 2.1%.

LIVESTOCK SLAUGHTERING

Trend estimates

Monthly movements of trend estimates showed decreases in all three livestock slaughtering series with cattle and calves down by 5.3%, sheep and lambs down by 1.5% and pigs down by 2.1%.

In July 2000, the trend estimate of the number of cattle and calves slaughtered was 19,700. This was down 21.9% on the number for July 1999, and down 17.9% on the number for July 1998.

The trend estimate for the slaughtering of sheep and lambs was 83,300 in July 2000. This was down 8.7% on the number for July 1999, but up 12.9% on the number for July 1998.

The trend estimate of 5,190 pigs slaughtered in July 2000 was 23.9% less than for July 1999 and 26.1% less than the trend estimate for July 1998 (see table 21).

BUILDING APPROVALS

Original terms

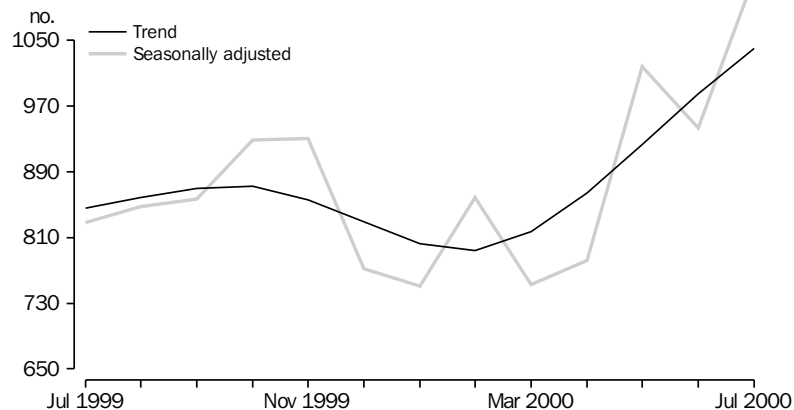
There were 84 dwelling units approved during July 2000, of which 83 were new houses, with 1 conversion. The number of dwelling units approved during July compared with 91 for June 2000 and 158 in July 1999.

At current prices, the value of total building was \$17.7 million in July 2000, 43.3% below the June 2000 figure of \$31.2 million and 52.9% below the July 1999 figure of \$37.6 million. Residential building contributed \$10.4 million and non-residential building \$7.3 million in July 2000 (see table 27 and *Building Approvals, Australia* (Cat. no. 8731.0)).

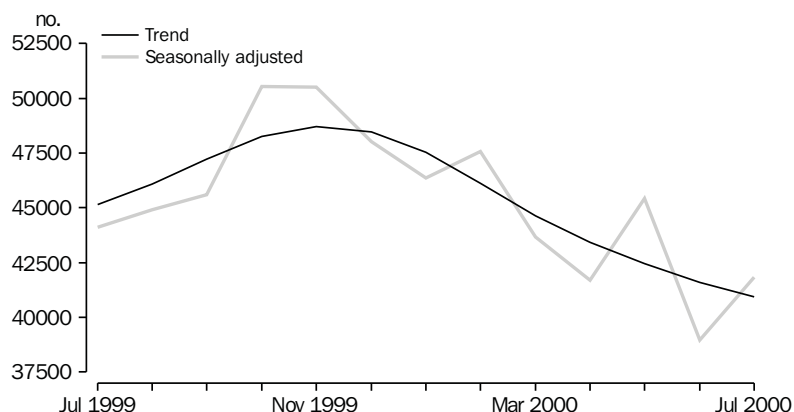
HOUSING FINANCE

Trend estimates Trend figures for the number of Housing Finance Commitments in Tasmania rose for July 2000 to 1,040. Tasmania has recorded a trend increase in the number of housing finance commitments in each month since February 2000. All other states and territories, as well as the Australian total, have shown trend decreases for each month in the year 2000. Only Tasmania recorded more housing finance commitments for July 2000 than for July 1999.

HOUSING FINANCE, TASMANIA, Number of dwellings



HOUSING FINANCE, AUSTRALIA, Number of dwellings



Trend estimates *continued*

The total value of commitments for Tasmania in July 2000 was \$79 million. This shows a 3.9% increase over the previous month, and a 16.2% increase over the July 1999 figure. All states and territories, other than Tasmania, have recorded successive decreases in the value of housing finance commitments for each month in the year 2000. Nationally, the value of commitments has decreased 10.7% between July 1999 and July 2000 (see table 28 and *Housing Finance for Owner Occupation, Australia* (Cat. no. 5609.0)).

NEW MOTOR VEHICLE REGISTRATIONS

Original terms There were 1205 new motor vehicles (excluding motorcycles) registered in Tasmania during July 2000. This was 13.8% above the 1,059 registered in June 2000 and 10.7% below the July 1999 figure of 1,349. Of the new motor vehicles (excluding motorcycles) registered in July 2000 in Tasmania, 81 vehicles were registered by vehicle rental businesses, compared with 1 registered by vehicle rental businesses in June 2000 and 171 in July 1999 (see table 34).

RETAIL

Original terms In original terms, the estimate of retail turnover in Australia for July 2000 was \$11,671.6 million, 2.0% below the figure recorded in July 1999. In original terms, the estimate of retail turnover in Tasmania for July 2000 was \$247.7 million, 6.4% below the figure for July 1999.

Seasonally adjusted terms In seasonally adjusted terms, the estimate of retail turnover in Australia for July 2000 was \$12,010.7 million, 0.3% above the figure recorded in July 1999. In seasonally adjusted terms, the estimate of retail turnover in Tasmania for July 2000 was \$264.8 million, 3.0% below the figure recorded in July 1999 (see table 35 and *Retail Trade, Australia* (Cat. no. 8501.0)).

OVERSEAS TRADE

The total value of Tasmania's overseas exports for the 1999–2000 financial year was \$2,214 million. This contributed 2.3% to the Australian total of \$97,262 million.

The value of Tasmania's exports for the month of July 2000 was \$163 million, a decrease of 7% over the month of June. Australia's exports for June totalled \$9,369 million, an increase of 2% over the June figure.

Tasmania's major export destinations for the month of July 2000 were Japan (\$37.1 million), Hong Kong (\$21.2 million) and United States of America (\$15.4 million). Major commodity groups exported for the month were non-ferrous metals (\$47.1 million) and metallic ores and metal scrap (\$20.6 million). For the financial year 1999–2000, major commodity groups exported were non-ferrous metals (\$681.9 million), wood and woodchips (\$303.0 million) and metallic ores and metal scrap (\$243.0 million).

LIST OF TABLES

1	Population	9
2	Births, deaths and marriages	9
3	Labour force status	10
4	Labour force status by region, males	11
5	Labour force status by region, females	12
6	Labour force status by region, persons	13
7	Teenage labour market	14
8	All employed persons by occupation	15
9	Employed wage and salary earners, sector and industry	16
10	Average hours worked	16
11	Job vacancies	17
12	Industrial disputes	17
13	Average weekly earnings of employees	18
14	Indexes of total hourly rates of pay	19
15	Summary of annual movements in wages and prices	20
16	House price index numbers, Hobart	20
17	Consumer price index, Hobart and eight capital cities combined	21
18	Price index of materials used in building other than house building, Hobart	22
19	Production of selected commodities	24
20	Livestock slaughtering: original	25
21	Livestock slaughtering: seasonally adjusted and trend	25
22	Meat production	26
23	Principal mineral concentrates produced	26
24	Sawmills and plywood mills, logs delivered and timber produced	27
25	Chipping and grinding of wood	28
26	Logs delivered for milling or chipping	28
27	Building approvals	29
28	Secured housing commitments	30
29	Private new capital expenditure by type of asset	30
30	Banking statistics	31
31	Accommodation establishments	32
32	National Parks, person entries	33
33	Tracks in National Parks, walker registrations	33
34	Registrations of new motor vehicles	34
35	Turnover of retail establishments at current prices	35
36	Value of overseas trade—Tasmania and Australia	36
37	Merchandise exports by selected countries and country groups	36
38	Merchandise exports by selected commodity groups	37
39	Major Statistical Indicators—Australia and State comparisons	38
40	Major Statistical Indicators—Tasmanian Statistical Divisions	40

1

POPULATION

	<i>Estimated resident population at end of period</i>	<i>Natural increase(a)</i>	<i>Net estimated migration gain</i>	<i>Total population growth</i>	<i>Annual growth rate(b)</i>
	'000	'000	'000	'000	%
1997	473.5	2.4	-3.4	-1.0	-0.20
1998	471.7	2.1	-3.9	-1.8	-0.38
1999	470.8	2.7	-3.6	-0.9	-0.19
1997					
December qtr	472.6	0.5	-1.0	-0.4	-0.34
1998					
March qtr	472.3	0.6	-1.0	-0.3	-0.38
June qtr	471.7	0.5	-1.1	-0.6	-0.38
September qtr	471.6	0.6	-0.7	-0.1	-0.30
December qtr	471.6	0.7	-0.7	-0.1	-0.23
1999					
March qtr	471.1	0.7	-1.2	-0.5	-0.26
June qtr	470.8	0.7	-1.0	-0.3	-0.19
September qtr	470.7	0.5	-0.6	-0.1	-0.20
December qtr	470.4	0.5	-0.7	-0.3	-0.24

(a) Excess of live births registered over deaths registered (based on usual State of residence).

(b) Percentage growth from same quarter in previous year.

Source: Australian Demographic Statistics (Cat. no. 3101.0).

2

BIRTHS, DEATHS AND MARRIAGES(a)

	<i>Births</i>		<i>Deaths</i>		<i>Infant mortality(b)</i>		<i>Marriages</i>	
	<i>no.</i>	<i>rate(c)</i>	<i>no.</i>	<i>rate(d)</i>	<i>no.</i>	<i>rate(e)</i>	<i>no.</i>	<i>rate(f)</i>
1997	5 974	1.768	3 837	6.8	43	7.2	2 672	5.6
1998	6 087	..	3 698	..	30	5.1	2 599	5.5
1999	6 103	..	3 728	..	46	7.7	2 449	5.2
1997								
December qtr	1 486	..	939	..	12	8.1	618	..
1998								
March qtr	1 464	..	839	..	3	2.0	800	..
June qtr	1 420	..	921	..	11	7.7	810	..
September qtr	1 636	..	1 081	..	9	5.8	331	..
December qtr	1 567	..	907	..	7	4.7	658	..
1999								
March qtr	1 545	..	865	..	9	6.1	808	..
June qtr	1 636	..	923	..	12	7.6	636	..
September qtr p	1 555	..	1 035	..	16	10.3	327	..
December qtr p	1 367	..	905	..	9	6.6	678	..

(a) Usual residents of Tasmania.

(b) Deaths of children under one year of age.

(c) Total fertility rate. The sum of age specific fertility rates (live births at each age of a mother per female population of that age). It represents the number of children a woman would bear during her lifetime if she experienced age-specific fertility rates at each age of her reproductive life.

(d) Standardised death rate. The overall death rate, per 1,000 persons, that would have prevailed in a standard population if it had experienced at each age the death rates of the population being studied. The standard population used in these calculations is all persons in the 1991 Australian population.

(e) Rate per 1,000 live births.

(f) Crude marriage rate is the number of marriages registered during the calendar year, per 1,000 estimated resident population at 30 June of that year.

Source: Australian Demographic Statistics (Cat. no. 3101.0).

3

LABOUR FORCE STATUS(a)—SEASONALLY ADJUSTED AND TREND

	Seasonally adjusted series(b)				Trend series(b)			
	Employed	Unemployed	Unemployment rate	Participation rate	Employed	Unemployed	Unemployment rate	Participation rate
	'000	'000	%	%	'000	'000	%	%
MALES								
1999								
August	110.5	11.5	9.4	67.7	110.4	12.7	10.3	68.3
September	110.2	13.1	10.6	68.4	110.4	12.6	10.3	68.3
October	109.8	12.5	10.2	67.9	110.2	12.6	10.3	68.2
November	109.9	13.5	10.9	68.5	110.1	12.5	10.2	68.0
December	110.5	12.4	10.1	68.2	109.9	12.2	10.0	67.8
2000								
January	109.8	11.8	9.7	67.5	109.7	11.9	9.7	67.5
February	109.7	10.9	9.1	66.9	109.5	11.5	9.5	67.2
March	109.3	11.0	9.1	66.7	109.4	11.5	9.5	67.0
April	108.5	11.6	9.7	66.6	109.4	11.6	9.6	67.1
May	109.3	11.9	9.8	67.2	109.6	12.0	9.9	67.4
June	110.2	13.6	11.0	68.6	109.9	12.4	10.1	67.8
July	110.8	11.6	9.5	67.8	110.2	12.7	10.4	68.1
August	110.5	13.6	11.0	68.7	110.5	13.1	10.6	68.5
FEMALES								
1999								
August	86.4	7.2	7.7	49.3	86.2	7.3	7.8	49.3
September	86.8	7.5	8.0	49.7	86.7	7.4	7.8	49.6
October	86.6	7.6	8.1	49.6	87.3	7.5	7.9	50.0
November	88.0	8.0	8.4	50.6	88.0	7.7	8.0	50.4
December	88.9	7.6	7.9	50.8	88.5	7.8	8.1	50.7
2000								
January	89.8	7.9	8.1	51.4	88.9	8.0	8.3	51.0
February	88.3	7.8	8.1	50.6	89.1	8.2	8.4	51.2
March	89.9	8.3	8.5	51.7	89.2	8.3	8.5	51.3
April	88.2	9.2	9.4	51.2	89.1	8.3	8.5	51.2
May	88.7	8.6	8.9	51.2	89.1	8.2	8.5	51.2
June	90.7	7.2	7.4	51.4	89.1	8.1	8.4	51.1
July	88.6	7.5	7.8	50.5	89.1	8.0	8.3	51.0
August	88.7	8.6	8.8	51.1	89.1	8.0	8.2	51.0
TOTAL								
1999								
August	196.8	18.6	8.6	58.2	196.7	20.0	9.2	58.6
September	197.0	20.6	9.5	58.8	197.1	20.0	9.2	58.7
October	196.4	20.2	9.3	58.5	197.5	20.1	9.2	58.8
November	197.9	21.5	9.8	59.3	198.1	20.2	9.2	59.0
December	199.4	20.0	9.1	59.3	198.5	20.1	9.2	59.0
2000								
January	199.6	19.6	9.0	59.2	198.6	19.9	9.1	59.0
February	198.0	18.7	8.6	58.5	198.6	19.7	9.1	59.0
March	199.2	19.3	8.9	59.0	198.5	19.7	9.1	58.9
April	196.7	20.8	9.6	58.7	198.5	20.0	9.1	59.0
May	198.0	20.6	9.4	59.0	198.7	20.2	9.2	59.1
June	200.9	20.8	9.4	59.8	199.0	20.5	9.3	59.2
July	199.5	19.1	8.7	58.9	199.3	20.8	9.4	59.3
August	199.1	22.2	10.0	59.6	199.6	21.0	9.5	59.5

(a) For explanation of terms and concepts, refer to Labour Force, Australia, Preliminary (Cat. no. 6202.0).

(b) Seasonal factors are reviewed annually to take account of each additional year's data. The results of the review are used to compile revised seasonally adjusted and trend estimates each February. Trend estimates for the most recent months are also revised each month; see Notes on page 2.

Source: Labour Force, Australia, Preliminary (Cat. no. 6202.0).

4

LABOUR FORCE STATUS BY REGION—MALES(a)(b)

	<i>Total employed</i>	<i>Total unemployed</i>	<i>Unemployment rate</i>	<i>Participation rate</i>
	'000	'000	%	%
HOBART AND SOUTHERN STATISTICAL DIVISIONS				
1997				
August	52.4	7.2	12.1	67.2
1999				
August	52.2	5.2	9.1	65.1
2000				
June	51.9	6.1	10.6	66.0
July	53.1	5.4	9.3	66.2
August	51.9	6.8	11.7	66.6
NORTHERN STATISTICAL DIVISION				
1997				
August	31.8	4.1	11.4	65.6
1999				
August	33.0	3.0	8.2	68.9
2000				
June	34.1	3.3	8.9	69.9
July	33.4	3.2	8.9	70.2
August	33.6	3.1	8.5	70.2
MERSEY-LYELL STATISTICAL DIVISION				
1997				
August	25.2	2.5	9.1	65.2
1999				
August	24.0	3.0	11.1	67.8
2000				
June	23.6	3.8	13.8	69.9
July	23.8	3.1	11.4	67.8
August	23.7	3.4	12.4	67.6
TASMANIA				
1997				
August	109.4	13.8	11.2	68.3
1999				
August	109.2	11.2	9.3	66.8
2000				
June	109.5	13.2	10.8	68.0
July	110.4	11.7	9.6	67.7
August	109.2	13.3	10.9	67.9

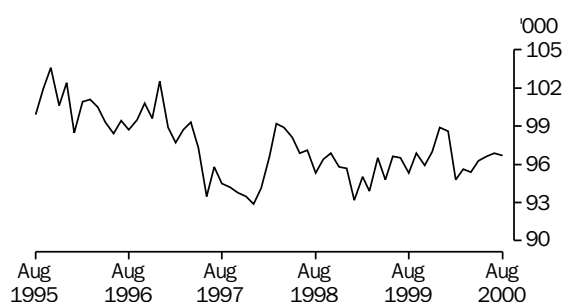
(a) For explanation of terms and concepts, refer to Labour Force, Australia (Cat. no. 6203.0).

(b) Data in this table are original series, i.e. they are not part of a seasonally adjusted or a trend series. Accordingly, care should be exercised when using these data.

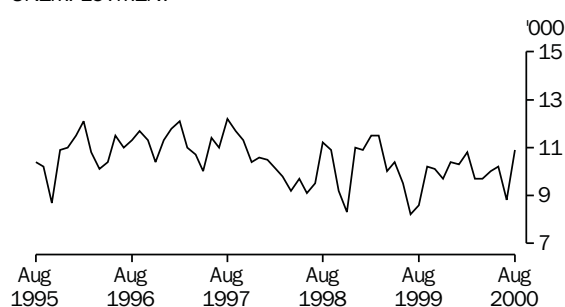
Source: Labour Force, Selected Summary Tables, Australia (Cat. no. 6291.0.40.001).

Hobart and Southern Statistical Divisions—Persons (see table 6)

EMPLOYMENT



UNEMPLOYMENT



5

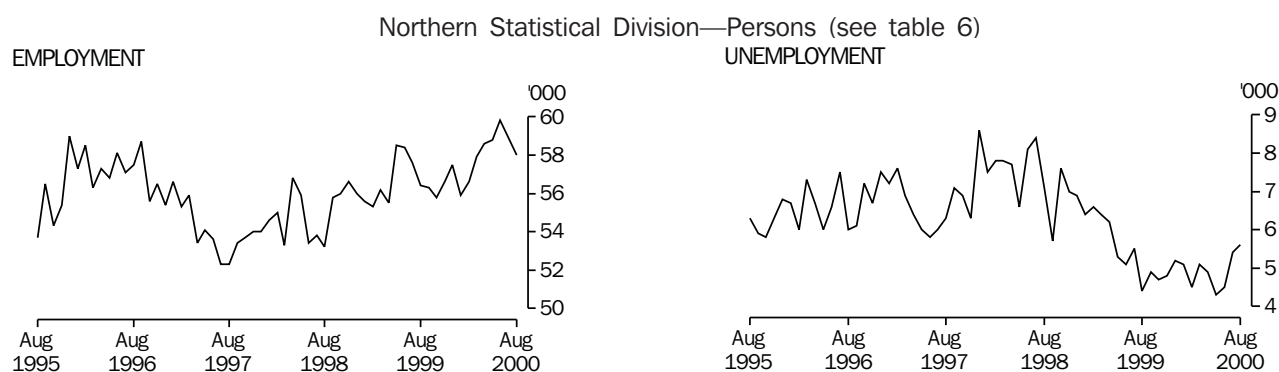
LABOUR FORCE STATUS BY REGION—FEMALES(a)(b)

	<i>Total employed</i>	<i>Total unemployed</i>	<i>Unemployment rate</i>	<i>Participation rate</i>
	'000	'000	%	%
HOBART AND SOUTHERN STATISTICAL DIVISIONS				
1997				
August	42.1	5.0	10.6	50.4
1999				
August	43.1	3.3	7.2	49.2
2000				
June	44.7	4.1	8.3	52.7
July	43.8	3.3	7.0	50.6
August	44.7	4.0	8.3	52.4
NORTHERN STATISTICAL DIVISION				
1997				
August	20.5	2.2	9.8	43.5
1999				
August	23.4	1.4	5.7	46.8
2000				
June	25.8	1.2	4.4	49.0
July	25.5	2.2	8.0	50.1
August	24.5	2.5	9.3	48.8
MERSEY-LYELL STATISTICAL DIVISION				
1997				
August	18.2	2.5	12.2	48.0
1999				
August	18.6	2.3	10.9	49.6
2000				
June	19.6	1.8	8.3	49.9
July	19.1	1.2	5.7	48.3
August	18.3	1.9	9.4	48.0
TASMANIA				
1997				
August	80.9	9.8	10.8	47.9
1999				
August	85.2	7.0	6.5	48.6
2000				
June	90.1	7.0	7.2	51.0
July	88.4	6.7	7.0	49.9
August	87.5	8.4	8.8	50.4

(a) For explanation of terms and concepts, refer to Labour Force, Australia (Cat. no. 6203.0).

(b) Data in this table are original series, i.e. they are not part of a seasonally adjusted or a trend series. Accordingly, care should be exercised when using these data.

Source: Labour Force, Selected Summary Tables, Australia (Cat. no. 6291.0.40.001).



6

LABOUR FORCE STATUS BY REGION—PERSONS(a)(b)

	<i>Total employed</i>	<i>Total unemployed</i>	<i>Unemployment rate</i>	<i>Participation rate</i>
	'000	'000	%	%
HOBART AND SOUTHERN STATISTICAL DIVISIONS				
1997				
August	94.5	12.2	11.4	58.6
1999				
August	95.3	8.6	8.3	56.9
2000				
June	96.6	10.2	9.5	59.2
July	96.9	8.8	8.3	58.2
August	96.7	10.9	10.1	59.3
NORTHERN STATISTICAL DIVISION				
1997				
August	52.3	6.3	10.8	56.5
1999				
August	56.4	4.4	7.2	57.7
2000				
June	59.8	4.5	7.0	59.3
July	58.9	5.4	8.5	59.9
August	58.0	5.6	8.8	59.2
MERSEY-LYELL STATISTICAL DIVISION				
1997				
August	43.4	5.0	10.4	58.2
1999				
August	42.6	5.3	11.1	58.4
2000				
June	43.2	5.5	11.4	59.5
July	43.0	4.2	9.0	57.8
August	42.0	5.3	11.1	57.5
TASMANIA				
1997				
August	190.2	23.6	11.0	57.9
1999				
August	194.3	18.3	8.6	57.5
2000				
June	199.6	20.2	9.2	59.3
July	198.9	18.4	8.5	58.6
August	196.7	21.8	10.0	58.9

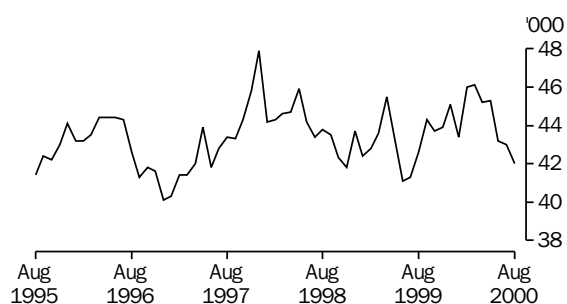
(a) For explanation of terms and concepts, refer to Labour Force, Australia (Cat. no. 6203.0).

(b) Data in this table are original series, i.e. they are not part of a seasonally adjusted or a trend series. Accordingly, care should be exercised when using these data.

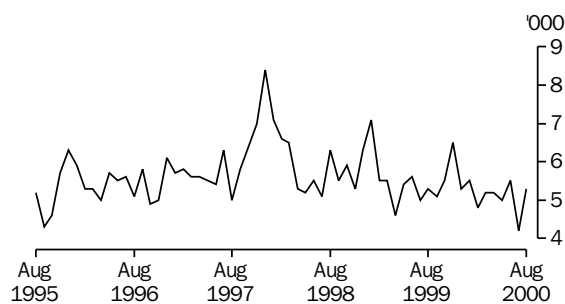
Source: Labour Force, Selected Summary Tables, Australia (Cat. no. 6291.0.40.001).

Mersey-Lyell Statistical Division—Persons (see table 6)

EMPLOYMENT



UNEMPLOYMENT



7

TEENAGE LABOUR MARKET(a)

	<i>Employed</i>		<i>Unemployed</i>		<i>Labour force</i>	<i>Not in labour force</i>	<i>Civilian population aged 15–19</i>	<i>Unemployment rate</i>	<i>Unemployment population ratio</i>	<i>Participation rate</i>
	<i>Full time</i>	<i>Total</i>	<i>Looking for full time work</i>	<i>Total</i>						
	'000	'000	'000	'000	'000	'000	'000	%	%	%
ATTENDING NEITHER A SCHOOL NOR A TERTIARY INSTITUTION FULL TIME										
1997										
July	5.2	8.3	3.1	3.2	11.5	2.1	13.6	27.9	23.6	84.7
1999										
July	5.5	7.8	1.5	1.7	9.5	2.4	11.9	17.8	14.1	79.5
2000										
May	6.6	8.5	2.7	2.8	11.3	1.2	12.6	24.6	22.1	90.1
June	6.3	8.3	2.1	2.3	10.6	1.8	12.4	21.7	18.6	85.5
July	5.6	7.9	2.8	3.2	11.0	1.4	12.5	28.8	25.4	88.4
ATTENDING SCHOOL OR A TERTIARY INSTITUTION FULL TIME										
1997										
July	0.1	5.2	0.2	1.8	7.4	13.9	21.3	29.8	10.3	34.7
1999										
July	0.2	7.2	0.4	1.6	8.8	13.8	22.6	17.7	6.9	38.8
2000										
May	0.1	5.7	0.5	2.4	8.1	14.1	22.2	29.4	10.8	36.6
June	0.5	7.3	0.7	2.0	9.3	13.1	22.4	21.4	8.9	41.5
July	0.0	7.0	0.2	1.2	8.3	14.0	22.3	14.6	5.4	37.0
TOTAL										
1997										
July	5.3	12.6	3.2	5.2	17.9	16.3	34.1	29.4	15.4	52.3
1999										
July	6.0	15.2	2.6	4.1	19.4	15.2	34.6	21.3	11.9	56.0
2000										
May	6.7	14.3	3.2	5.2	19.5	15.4	34.8	26.6	14.9	55.9
June	6.8	15.6	2.8	4.3	19.9	14.9	34.8	21.6	12.3	57.2
July	5.6	14.9	3.0	4.4	19.3	15.5	34.8	22.7	12.6	55.5

(a) Persons aged 15–19 years. For explanation of terms and concepts, refer to Labour Force, Australia (Cat. no. 6203.0). Care should be exercised when using these series as some estimates are subject to high sampling variability.

Source: Unpublished data, Labour Force, Estimates; Labour Force, Teenage Employment and Unemployment, Australia, Preliminary, Data Report (Cat. no. 6202.0.40.001).

ALL EMPLOYED PERSONS BY OCCUPATION(a)						
	May 1999	May 2000			Proportion of total employed	
	Persons	Males	Females	Persons	May 1999	May 2000
	'000	'000	'000	'000	%	%
Managers and administrators						
Generalist managers	1.6	2.2	—	2.2	0.8	1.1
Specialist managers	3.6	2.8	1.2	4.0	1.8	2.0
Farmers and farm managers	7.1	5.3	2.2	7.5	3.6	3.8
Total	12.2	10.2	3.4	13.6	6.2	6.9
Professionals						
Science, building and engineering professionals	2.7	2.8	1.0	3.9	1.4	2.0
Business and information professionals	4.4	3.6	2.1	5.6	2.2	2.8
Health professionals	7.8	2.3	7.0	9.2	4.0	4.7
Education professionals	8.7	4.0	5.8	9.8	4.4	5.0
Social, arts and miscellaneous professionals	6.9	2.6	2.9	5.5	3.5	2.8
Total	30.5	15.2	18.7	34.0	15.5	17.3
Associate professionals						
Science, engineering and related associate professionals	2.8	1.9	0.8	2.7	1.4	1.4
Business and administration associate professionals	5.2	2.0	2.4	4.4	2.6	2.2
Managing supervisors (sales and service)	7.9	5.1	2.8	7.9	4.0	4.0
Other associate professionals	2.2	1.7	1.1	2.8	1.1	1.4
Health and welfare associate professionals	1.0	0.2	1.0	1.2	0.5	0.6
Total	19.2	10.9	8.1	18.9	9.8	9.6
Tradespersons and related workers						
Mechanical and fabrication engineering tradespersons	4.8	4.1	—	4.1	2.4	2.1
Automotive tradespersons	2.5	3.3	—	3.3	1.3	1.7
Electrical and electronics tradespersons	4.9	4.5	—	4.5	2.5	2.3
Construction tradespersons	4.1	5.3	0.1	5.4	2.1	2.7
Other tradespersons and related workers	9.6	7.9	2.7	10.6	4.9	5.4
Total	25.8	25.0	2.8	27.8	13.1	14.1
Advanced clerical and service workers						
Secretaries and personal assistants	2.5	—	2.7	2.7	1.3	1.4
Other advanced clerical and service workers	2.1	0.9	2.2	3.1	1.1	1.6
Total	4.7	0.9	4.9	5.8	2.4	2.9
Intermediate clerical, sales and service workers						
Intermediate clerical workers	20.9	4.8	13.8	18.6	10.6	9.5
Intermediate sales and related workers	3.5	2.4	1.0	3.3	1.8	1.6
Intermediate service workers	13.7	2.7	10.7	13.4	7.0	6.8
Total	38.1	9.8	25.6	35.4	19.4	18.0
Intermediate production and transport workers						
Intermediate plant operators	5.6	6.3	0.3	6.6	2.8	3.4
Intermediate machine operators	2.4	1.5	0.8	2.3	1.2	1.2
Road and rail transport drivers	7.6	6.2	0.3	6.5	3.9	3.3
Other intermediate production and transport workers	5.6	3.2	1.1	4.3	2.8	2.2
Total	21.1	17.2	2.6	19.8	10.7	10.1
Elementary clerical, sales and service workers						
Elementary clerks	1.5	0.9	0.8	1.7	0.8	0.9
Elementary sales workers	16.8	4.8	10.8	15.6	8.5	7.9
Elementary service workers	1.2	0.7	1.5	2.2	0.6	1.1
Total	19.5	6.5	13.0	19.5	9.9	9.9
Labourers and related workers						
Cleaners	6.3	1.5	4.6	6.1	3.2	3.1
Factory labourers	6.5	4.0	2.6	6.6	3.3	3.4
Other labourers and related workers	12.8	9.2	3.7	12.8	6.5	6.5
Total	25.5	14.7	10.8	25.5	13.0	13.0
Total employed	196.7	110.5	89.9	200.4	100.0	100.0

(a) For explanation of terms and concepts, refer to Labour Force, Australia (Cat. no. 6203.0).

Source: Unpublished data, Labour Force, Estimates.

9

WAGE AND SALARY EARNERS, SECTOR AND INDUSTRY(a)

	<i>Employees, February 2000</i>			<i>Percentage distribution</i>	
	<i>Private</i>	<i>Public</i>	<i>Total</i>	<i>February 1999</i>	<i>February 2000</i>
	<i>'000</i>	<i>'000</i>	<i>'000</i>	<i>%</i>	
Agriculture, forestry & fishing	n.a.	0.6	0.6	0.4	0.4
Mining	2.0	—	2.0	0.8	1.3
Manufacturing	n.p.	n.p.	21.2	14.5	13.4
Electricity, gas & water, Construction	4.2	2.0	6.2	4.6	3.9
Wholesale & Retail trade	39.7	—	39.8	20.4	25.2
Accommodation, cafes & restaurants	8.4	—	8.5	6.7	5.4
Transport & storage	5.0	0.8	5.8	4.5	3.7
Communication services	n.p.	n.p.	2.3	1.5	1.5
Finance, insurance, Property & business services	15.0	0.7	15.8	9.8	10.0
Government administration and defence	—	9.5	9.5	6.1	6.0
Education	3.0	12.4	15.4	9.9	9.8
Health and community services	12.9	8.2	21.1	14.1	13.4
Cultural, recreational, Personal and other services	6.9	3.1	10.0	6.5	6.3
Total all industries	118.8	39.1	157.9	100.0	100.0

(a) For explanation of terms and concepts, refer to Wage and Salary Earners, Australia (Cat. no. 6248.0).

Source: *Wage and Salary Earners, Australia* (Cat. no. 6248.0).

10

AVERAGE HOURS WORKED

	<i>Average weekly total hours worked, all employed persons(a)</i>		
	<i>Males</i>	<i>Females</i>	<i>Persons</i>
1999			
February	36.7	25.6	31.8
May	38.8	28.0	34.0
August	39.2	28.1	34.3
November	39.8	27.2	34.1
2000			
February	37.1	24.7	31.6
May	38.9	28.1	34.1

(a) For explanation of terms and concepts, refer to Labour Force, Australia (Cat. no. 6203.0).

Source: *Unpublished data*.

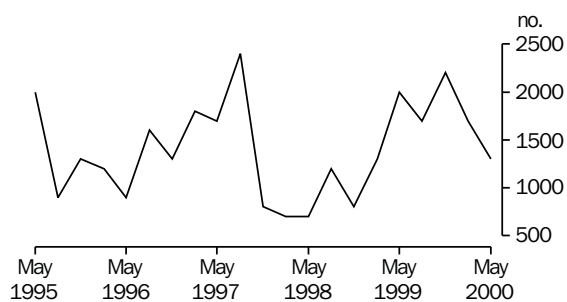
11

JOB VACANCIES(a)(b)

	<i>no.</i>	<i>rate(c)</i>
	'000	%
1999		
February	1.3	0.8
May	2.0	1.4
August	1.7	1.0
November	2.2	1.3
2000		
February	1.7	1.0
May	1.3	0.8

- (a) For explanation of terms and concepts, refer to Job Vacancies, Australia (Cat. no. 6354.0).
 (b) Care should be exercised in using these series as some estimates are subject to high sampling variability.
 (c) Job vacancies are expressed as a percentage of the number of job vacancies divided by the number of employees plus job vacancies.

JOB VACANCIES



12

INDUSTRIAL DISPUTES(a)

	<i>Working days lost</i>		<i>Working days lost per thousand employees</i>
	'000	<i>Twelve months ended</i>	<i>no.</i>
1999		1999	
June	—	June	14
July	—	July	14
August	0.1	August	6
September	—	September	5
October	—	October	5
November	—	November	3
December	—	December	2
2000		2000	
January	0.1	January	3
February	—	February	3
March	0.2	March	4
April	0.2	April	5
May	0.2	May	6
June	0.2	June	6
Twelve months ended			
June 2000	1.0		

- (a) For explanation of terms and concepts, refer to Industrial Disputes, Australia (Cat. no. 6321.0).

AVERAGE WEEKLY EARNINGS OF EMPLOYEES(a)—ORIGINAL AND TREND

	<i>Full time adult males</i>		<i>All males</i>	<i>Full time adult females</i>		<i>All females</i>	<i>Full time adult persons</i>		<i>All employees</i>
	<i>Weekly ordinary time earnings</i>	<i>Weekly total earnings</i>	<i>Weekly total earnings</i>	<i>Weekly ordinary time earnings</i>	<i>Weekly total earnings</i>	<i>Weekly total earnings</i>	<i>Weekly ordinary time earnings</i>	<i>Weekly total earnings</i>	<i>Weekly total earnings</i>
	\$	\$	\$	\$	\$	\$	\$	\$	\$
ORIGINAL									
1999									
February	747.40	803.10	696.30	619.90	632.20	422.50	705.10	746.40	560.50
May	731.90	771.20	657.80	613.70	625.30	421.00	692.00	722.00	539.60
August	749.70	778.50	660.50	619.10	629.90	420.70	703.60	726.10	537.60
November	761.00	801.60	682.50	641.30	658.90	433.90	719.00	751.50	554.90
2000									
February	767.70	799.30	686.20	639.60	656.70	444.20	723.90	750.60	566.70
May	788.10	828.20	695.80	643.40	659.10	428.00	737.20	768.80	558.10
TREND(b)									
1999									
February	738.70	784.30	672.80	616.40	629.10	417.10	697.30	731.90	544.60
May	743.00	784.20	671.10	618.80	630.90	420.60	700.80	732.30	545.30
August	748.10	784.60	670.40	625.10	638.10	427.30	705.80	734.10	547.10
November	757.40	792.50	675.50	632.50	647.40	432.00	713.70	741.70	551.40
2000									
February	710.60	805.60	683.40	639.20	655.60	435.20	724.30	752.90	557.70
May	785.70	819.60	689.40	645.10	662.90	436.30	736.60	765.10	562.60

(a) For explanation of terms and concepts, refer to Average Weekly Earnings, States and Australia (Cat. no. 6302.0).

(b) ABS trend estimates for the most recent months are revised, see Notes on page 2.

Source: Average Weekly Earnings, States and Australia (Cat. no. 6302.0).

	Index numbers				Percentage change		
	Sept qtr 1999	Dec qtr 1999	Mar qtr 2000	June qtr 2000	Sep qtr 1999 to Dec qtr 1999	Dec qtr 1999 to Mar qtr 2000	Mar qtr 2000 to June qtr 2000
SELECTED INDUSTRIES(c)							
Manufacturing	105.2	105.8	106.6	107.0	0.6	0.8	0.4
Retail trade	105.1	105.7	106.0	106.5	0.6	0.3	0.5
Transport & storage	107.2	107.6	108.0	n.a.	0.4	0.4	—
Government administration and defence	104.4	104.7	104.8	105.4	0.3	0.1	0.6
Education	107.9	107.9	108.3	108.5	—	0.4	0.2
Health and community services	103.8	104.7	104.9	105.4	0.9	0.2	0.5
Total all industries(d)	105.5	106.0	106.5	106.9	0.5	0.5	0.4
OCCUPATION							
Professionals	106.5	106.8	107.2	107.5	0.3	0.4	0.3
Associate Professionals	105.5	105.9	106.4	106.9	0.4	0.5	0.5
Tradespersons & related workers	105.0	105.6	106.2	106.5	0.6	0.6	0.3
Intermediate clerical, sales & service workers	105.1	105.7	106.0	106.2	0.6	0.3	0.2
Intermediate production & transport workers	105.4	105.8	106.3	106.8	0.4	0.5	0.5
Elementary clerical, sales & service workers	107.5	108.0	108.6	109.3	0.5	0.6	0.6
Labourers & related workers	104.4	105.0	105.5	105.8	0.6	0.5	0.3
All occupations	105.5	106.0	106.5	106.9	0.5	0.5	0.4

(a) Base of each index: September quarter 1997 = 100.0.

(b) These indexes are a measure of quarterly changes in wage and salary costs for employee jobs. They were compiled for the first time for the December quarter 1997. They are one of four sets of indexes that together comprise the Wage Cost Index. For explanation of terms and concepts, refer to Wage Cost Index, Australia (Cat. no. 6345.0).

(c) Industry is shown at the ANZSIC division level for selected divisions.

(d) Excludes Agriculture, forestry and fishing.

Source: Unpublished data.

15

SUMMARY OF ANNUAL MOVEMENTS IN WAGES AND PRICES(a)

	<i>CPI all groups–Hobart</i>	<i>Price index of materials used in house building all groups–Hobart(b)</i>	<i>Price index of materials used in building other than house building all groups–Hobart(b)</i>	<i>Average weekly total earnings, full-time adult employees(c)</i>
1997–98	–0.1	0.7	0.9	5.1
1998–99	1.0	1.0	0.9	2.4
1999–2000	1.9	1.3	0.4	2.5
1998				
June	0.6	1.6	1.2	4.9
September	1.8	1.8	1.6	3.3
December	1.2	1.4	1.2	3.3
1999				
March	0.5	0.7	0.7	3.4
June	0.4	–0.1	0.2	–0.3
September	0.4	–0.3	0.1	0.8
December	1.1	0.2	–0.2	2.3
2000				
March	2.6	2.0	0.6	0.6
June	3.3	3.4	1.2	6.5

(a) Weekly award rates of pay collection has been discontinued from June 1997.

(b) Only quarterly data collected from June 1997. Earlier data has been re-compiled from monthly to quarterly.

(c) March, June, September and December data relates to February, May, August and November survey dates as published in 6302.2.

Source: Consumer Price Index, Australia (Cat. no. 6401.0); Price Index of Materials Used in House Building, Six State Capital Cities (Cat. no. 6408.0), (quarterly from June 1997); Price Index of Materials Used in Other than House Building, Six State Capital Cities (Cat. no. 6407.0), (quarterly from June 1997); Average Weekly Earnings, States and Australia (Cat. no. 6302.0).

16

HOUSE PRICE INDEX NUMBERS(a)(b)

	<i>Established house price index</i>		<i>Project home price index</i>	
	<i>Index</i>	<i>% change(c)</i>	<i>Index</i>	<i>% change(c)</i>
1997–98	125.4	–2.4	123.3	—
1998–99	123.2	–1.8	123.3	—
1999–2000	129.0	4.7	126.2	2.4
1998				
June	124.8	–3.6	123.3	—
September	123.8	–0.8	123.3	—
December	121.7	–1.7	123.3	—
1999				
March	123.7	1.6	123.3	—
June	123.6	–0.1	123.3	—
September	125.3	1.4	124.0	0.6
December	127.8	2.0	125.4	1.1
2000				
March	128.6	0.6	127.5	1.7
June	134.2	4.4	127.9	0.3

(a) Base of each Index: 1989–90 = 100.

(b) Used in calculating the mortgage interest charges component of the Consumer Price Index.

(c) Percentage change over previous period.

Source: House Price Indexes: Eight Capital Cities (Cat. no. 6416.0).

Hobart

	<i>Food</i>	<i>Clothing</i>	<i>Housing</i>	<i>Household equipment and operation</i>	<i>Transportation</i>	<i>Alcohol and tobacco</i>
1997						
March	120.7	105.7	101.9	120.1	122.8	153.1
June	121.0	105.3	98.4	120.1	121.7	153.5
September	121.0	104.8	97.7	119.7	122.2	153.6
December	121.7	106.0	95.5	119.7	122.1	155.6
1998						
March	121.7	105.5	95.3	119.4	121.7	158.0
June	122.3	105.3	95.5	119.5	120.5	160.2
September	124.7	105.1	95.6	120.4	120.4	159.6
December	125.0	105.7	95.4	120.8	118.6	159.1
1999						
March	125.5	104.7	95.8	119.5	118.4	161.5
June	126.8	104.6	95.9	119.4	120.4	160.0
September	126.3	104.5	96.9	119.3	123.1	158.1
December	127.5	103.9	97.4	119.1	123.8	163.3
2000						
March	127.8	104.9	98.8	120.2	126.6	167.2
June	129.1	105.0	99.2	121.2	129.3	169.9

Hobart *Weighted average of eight capital cities*

	<i>Health and personal care</i>	<i>Recreation and education</i>	<i>Index, all groups</i>	<i>% change over previous period, all groups</i>	<i>Index</i>	<i>% change over previous period</i>
1997						
March	159.4	120.5	121.9	0.5	120.5	0.2
June	162.6	119.2	121.3	-0.5	120.2	-0.2
September	153.0	119.2	120.6	-0.6	119.7	-0.4
December	160.9	120.6	121.2	0.5	120.0	0.3
1998						
March	162.7	121.7	121.5	0.2	120.3	0.3
June	166.1	122.6	122.0	0.4	121.0	0.6
September	171.5	122.5	122.8	0.7	121.3	0.2
December	169.5	124.2	122.7	-0.1	121.9	0.5
1999						
March	154.4	125.2	122.1	-0.5	121.8	-0.1
June	154.9	124.9	122.5	0.3	122.3	0.4
September	160.7	125.6	123.3	0.7	123.4	0.9
December	160.0	125.6	124.0	0.6	124.1	0.6
2000						
March	161.9	125.7	125.3	1.0	125.2	0.9
June	164.3	125.7	126.5	1.0	126.2	0.8

(a) Base year: 1989-90 = 100.

(b) Further information on construction of CPI indexes is contained in the bulletin Australian Consumer Price Index Concepts, Sources and Methods (Cat. no. 6461.0).

Source: Consumer Price Index, Australia (Cat. no. 6401.0).

Index numbers for selected major building materials

	<i>Structural timber</i>	<i>Clay bricks</i>	<i>Ready mixed concrete</i>	<i>Precast concrete products</i>	<i>Steel decking, cladding etc.</i>	<i>Structural steel</i>
1996-97	110.3	125.3	116.2	132.2	115.0	126.2
1997-98	108.9	129.0	118.0	131.5	117.8	127.2
1998-99	109.1	130.8	119.5	131.6	110.8	128.0
1998						
March	109.2	129.4	120.4	131.7	118.9	127.4
June	112.4	129.4	119.9	131.7	114.3	127.4
September	109.4	130.2	119.2	131.7	111.3	127.7
December	108.9	131.1	120.6	131.7	111.3	128.1
1999						
March	108.9	131.1	120.4	131.5	110.3	128.1
June	109.2	130.8	117.9	131.5	110.3	128.1
September	108.2	126.9	119.4	131.6	113.7	128.8
December	111.7	126.9	118.0	131.6	104.6	128.8
2000						
March	116.9	130.9	117.5	131.6	110.1	128.8
June	120.7	131.6	117.5	131.6	109.8	128.8

Index numbers for selected major building materials

	<i>Reinforcing steel bar, fabric and mesh</i>	<i>Aluminium windows</i>	<i>Fabricated steel products</i>	<i>Builders hardware</i>	<i>Sand and aggregate</i>	<i>Paint and other coatings</i>	<i>Non-ferrous pipes and fittings</i>
1996-97	110.7	105.9	113.3	117.2	132.7	126.6	165.2
1997-98	112.7	107.2	114.7	113.7	124.5	127.3	164.3
1998-99	113.4	107.3	116.0	113.4	127.9	133.3	161.2
1998							
March	113.5	106.8	114.8	112.8	127.5	130.5	162.9
June	113.4	108.4	116.1	114.0	127.5	130.7	162.6
September	113.4	108.4	116.1	113.7	127.9	132.7	162.8
December	113.3	106.7	116.1	113.9	127.9	133.9	160.2
1999							
March	113.4	106.9	116.1	114.8	127.9	134.2	161.4
June	113.4	107.0	115.6	111.3	127.9	132.5	160.2
September	113.4	107.0	116.1	110.8	135.4	131.7	162.4
December	110.2	107.0	113.6	114.8	139.4	133.5	166.0
2000							
March	109.1	109.9	113.1	120.2	150.4	135.2	167.2
June	109.1	110.1	113.1	118.1	150.9	134.2	177.0

(a) Base year: 1989-90 = 100.

(b) Index numbers in this table have been recompiled to reflect the change to a quarterly collection basis from June 1997.

	<i>All electrical materials</i>		<i>All mechanical services</i>		<i>All plumbing materials</i>	
	<i>Index</i>	<i>% change over previous period</i>	<i>Index</i>	<i>% change over previous period</i>	<i>Index</i>	<i>% change over previous period</i>
1996–97	117.4	–1.0	117	1.7	122.8	–3.8
1997–98	117.2	–0.2	117	—	121.9	–0.7
1998–99	115.8	–1.2	119	1.7	124.5	2.1
1998						
March	116.9	–0.8	117.4	0.5	121.6	–0.3
June	116.5	–0.3	117.1	–0.3	121	–0.5
September	116.1	–0.3	117.8	0.6	124.9	3.2
December	116.8	0.6	119.1	1.1	124.1	–0.6
1999						
March	115.2	–1.4	119.4	0.3	124.4	0.2
June	115.2	—	119.5	0.1	124.5	0.1
September	115.9	0.6	119.3	–0.2	122.3	–1.8
December	117.5	1.4	119.8	0.4	126.5	3.4
2000						
March	118.3	0.7	110.3	0.4	128	1.2
June	118.7	0.3	121.9	1.3	131	2.3
	<i>All groups excluding electrical materials and mechanical services</i>		<i>All groups</i>			
	<i>Index</i>	<i>% change over previous period</i>	<i>Index</i>	<i>% change over previous period</i>		
1996–97	116.8	1.1	116.3	1		
1997–98	118	1	117.4	0.9		
1998–99	118.8	0.7	118.5	0.9		
1998						
March	118.2	0.4	117.7	0.4		
June	118.9	0.6	118.1	0.3		
September	119.1	0.2	118.4	0.3		
December	119	–0.1	118.6	0.2		
1999						
March	118.8	–0.2	118.5	–0.1		
June	118.4	–0.3	118.3	–0.2		
September	118.8	0.3	118.5	0.2		
December	118.4	–0.3	118.4	–0.1		
2000						
March	119.3	0.8	119.2	0.7		
June	119.7	0.3	119.7	0.4		

(a) Base year: 1989–90 = 100.

(b) Index numbers in this table have been recompiled to reflect the change to a quarterly collection basis from June 1997.

Source: Price Index of Materials Used in Other than House Building, Six State Capital Cities (Cat. no. 6407.0).

	<i>Dairy products(a)</i>			<i>Staff hours worked</i>	
	<i>Whole milk(b)</i>	<i>Factory butter(c)</i>	<i>Factory cheese</i>	<i>Textile manufacturing(d)</i>	<i>Vegetable preserving</i>
	<i>million litres</i>	<i>tonnes</i>	<i>tonnes</i>	<i>'000</i>	<i>'000</i>
1997-98	542.8	8 745	26 835	1 125	1 128
1998-99	603.4	11 546	29 973	1 061	1 084
1999-2000	608.6	8 209	33 331	1 032	1 019
1999					
July	13.6	307	431	79	78
August	25.2	244	1 161	94	97
September	60.8	406	3 599	96	62
October	89.3	1 257	3 850	92	66
November	87.1	1 508	4 054	94	104
December	81.6	1 562	4 714	71	87
2000					
January	66.8	879	3 735	43	60
February	51.7	378	3 473	96	90
March	47.3	608	3 804	103	92
April	38.0	363	2 857	75	r 88
May	29.7	232	983	107	r 107
June	17.5	465	670	83	r 90
July	n.y.a.	n.y.a.	n.y.a.	82	80
		<i>Refined zinc</i>	<i>Metallurgical refining</i>	<i>Electricity(g)</i>	
		<i>'000 tonnes</i>	<i>Index(f)</i>	<i>million kW.h</i>	
1997-98		197.0	116.6	9 700	
1998-99		214.3	125.0	9 910	
1999-2000		231.7	133.2	10050.0	
1999					
July		18.8	133.8	..	
August		20.7	138.2	..	
September		19.1	130.2	(Sept qtr) 2 680	
October		19.4	130.5	..	
November		19.9	130.3	..	
December		19.3	129.6	(Dec qtr) 2 390	
2000					
January		20.1	130.3	..	
February		18.6	126.4	..	
March		19.6	141.2	(Mar qtr) 2 360	
April		18.7	133.8	..	
May		18.7	136.4	..	
June		18.7	137.2	(June qtr) 2 620	
July		20.6	144.0	..	

(a) Source: Australian Dairy Corporation.

(b) Includes the whole milk equivalent of farm cream intake.

(c) Includes butter equivalent of butter oil.

(d) Includes spinning, weaving and carpet making. Reported by establishments which manufacture textiles only, or manufacture clothing and textiles in the one plant.

(e) Metallurgical refining index (Base year: 1979-80 = 100.0). Output from selected establishments covering the smelting and refining of ferro-alloys, zinc and aluminium. The weighting pattern is based on the establishments' value added as derived from the 1979-80 manufacturing Census. For multi product establishments, value added was apportioned to products on the basis of gross receipts from each product.

(f) Collected on a quarterly basis as from 1997.

Source: Unpublished data.

20

LIVESTOCK SLAUGHTERING

	Cattle					
	Bulls, bullocks and steers	Cows and heifers	Calves	Sheep	Lambs	Pigs
	'000	'000	'000	'000	'000	'000
1997-98	93.4	123.6	53.9	461.0	423.3	78.1
1998-99	94.8	116.3	61.0	439.9	480.1	81.2
1999-2000	109.3	107.6	70.1	589.6	462.6	70.1
1998						
July	8.4	10.4	2.3	21.7	37.9	8.5
1999						
July	10.1	8.7	2.2	36.3	39.8	6.6
August	8.4	6.0	26.7	24.8	38.6	6.5
September	8.0	6.6	27.2	24.3	32.0	6.9
October	8.0	7.8	7.7	38.7	33.6	4.5
November	8.4	7.8	0.9	45.6	31.3	4.7
December	9.6	10.1	0.2	67.5	36.5	7.2
2000						
January	8.9	8.1	0.2	55.6	38.4	4.3
February	9.3	10.1	0.2	68.0	46.0	5.3
March	11.7	11.1	0.8	76.4	55.5	6.8
April	8.3	8.5	1.4	53.1	32.3	4.9
May	9.0	11.6	1.7	48.2	37.5	5.7
June	r 9.1	r 12.9	0.9	r 51.5	r 44.1	6.7
July	7.0	6.7	1.2	23.0	36.2	5.0

Source: Unpublished data.

21

LIVESTOCK SLAUGHTERING—SEASONALLY ADJUSTED(a) AND TREND(b)

	Seasonally adjusted			Trend		
	Cattle and calves	Sheep and lambs	Pigs	Cattle and calves	Sheep and lambs	Pigs
	'000	'000	'000	'000	'000	'000
1998						
July	23.4	64.1	7.0	24.0	73.8	7.0
1999						
July	24.4	92.4	5.7	25.2	91.2	6.8
August	30.0	115.5	7.8	25.5	95.0	6.6
September	25.8	82.8	6.6	25.1	95.0	6.3
October	23.7	100.9	5.1	24.2	92.0	6.0
November	21.8	84.1	5.8	23.5	88.0	5.7
December	19.4	77.7	5.6	23.0	84.8	5.5
2000						
January	25.1	77.9	4.9	23.0	83.6	5.5
February	23.9	89.0	6.2	23.2	84.3	5.5
March	26.8	94.7	5.8	23.2	85.4	5.6
April	19.3	80.9	5.3	22.6	85.9	5.5
May	21.5	80.4	5.5	21.7	85.5	5.4
June	22.3	94.1	5.4	20.8	84.6	5.3
July	18.1	75.9	4.8	19.7	83.3	5.2

(a) Seasonally adjusted factors are reviewed annually to take account of each additional year's original data. The results of the review are used to compile revised seasonally adjusted and trend estimates; see Notes page 2.

(b) ABS trend estimates for the most recent months are revised; see Notes page 2.

Source: Unpublished data.

22

MEAT PRODUCTION(a)

	<i>Beef</i>	<i>Veal</i>	<i>Mutton</i>	<i>Lamb</i>	<i>Pigmeat(b)</i>	<i>Total</i>
	<i>tonnes</i>	<i>tonnes</i>	<i>tonnes</i>	<i>tonnes</i>	<i>tonnes</i>	<i>tonnes</i>
1997-98	53 061	1 148	9 840	8 072	4 915	77 042
1998-99	53 273	1 242	8 725	9 223	5 241	77 701
1999-2000	57 714	1 391	11 791	8 952	4 403	34 249
1998						
July	4 474	50	425	717	560	6 227
1999						
July	5 086	46	722	775	439	7 067
August	3 907	520	489	777	396	6 089
September	3 897	524	480	621	439	5 961
October	4 187	154	754	650	282	6 026
November	4 348	19	926	601	286	6 180
December	5 277	6	1 414	695	424	7 816
2000						
January	4 662	7	1 120	731	269	6 789
February	5 154	7	1 364	884	333	7 741
March	6 091	20	1 518	1 071	425	9 125
April	4 455	31	1 052	619	308	6 465
May	5 317	37	949	729	366	7 399
June	5 529	20	1 012	867	436	7 863
July	3 581	26	445	693	324	5 068

(a) Carcass weight.

(b) Includes pork used for production of bacon and ham.

Source: Unpublished data.

23

PRINCIPAL MINERAL CONCENTRATES PRODUCED

	<i>Copper</i>	<i>Iron (pellets)</i>	<i>Lead</i>	<i>Lead-zinc</i>	<i>Tin</i>	<i>Zinc</i>
	<i>'000 tonnes</i>	<i>'000 tonnes</i>	<i>'000 tonnes</i>	<i>'000 tonnes</i>	<i>'000 tonnes</i>	<i>'000 tonnes</i>
1997-98	109.6	820.8	84.6	26.2	16.2	335.4
1998-99	113.5	1 816.1	101.8	12.6	12.5	382.3
1999-2000 p	104.3	2 089.9	98.7	7.9	14.8	311.9
1998						
June	27.8	402.5	18.1	6.0	4.4	80.1
September	25.8	453.3	21.5	5.6	1.3	92.0
December	29.9	478.2	26.1	3.2	4.0	95.3
1999						
March	30.5	481.2	29.5	2.5	3.7	97.1
June	27.3	403.4	24.7	1.5	3.6	98.0
September	27.5	479.5	28.4	2.7	3.9	94.8
December	26.9	568.2	28.1	2.5	4.0	86.2
2000						
March	26.2	517.7	22.4	1.4	3.3	70.4
June p	23.8	524.4	19.8	1.3	3.6	60.4

Source: Mineral Resources Tasmania, Department of Infrastructure, Energy and Resources.

	Tasmanian-grown logs delivered					Sawn, peeled and sliced timber produced(a)				
	<i>Eucalypts</i>	<i>Hardwoods, excluding eucalypts(b)</i>	<i>Plant-ation(c)</i>	<i>Native soft-woods(d)</i>	<i>Total</i>	<i>Eucalypts</i>	<i>Hardwoods, excluding eucalypts(b)</i>	<i>Plant-ation(c)</i>	<i>Native soft-woods(d)</i>	<i>Total</i>
	'000 m ³	'000 m ³	'000 m ³	'000 m ³	'000 m ³	'000 m ³	'000 m ³	'000 m ³	'000 m ³	'000 m ³
1997-98	496.8	24.3	357.7	1.6	880.3	171.1	5.3	167.3	0.4	344.2
1998-99	499.9	22.6	351.9	1.0	875.4	159.7	5.1	169.7	0.3	334.8
1999-2000	510.1	28.8	396.2	0.9	936.9	169.7	5.3	190.6	0.4	366.0
1998										
June	128.9	4.6	86.5	0.6	220.6	41.1	1.6	39.1	0.1	81.9
September	129.9	3.8	88.7	0.2	222.7	43.9	1.4	41.5	—	86.8
December	134.6	2.9	81.3	0.2	218.9	40.8	1.2	42.5	0.1	84.7
1999										
March	110.8	9.7	90.7	0.2	211.4	35.4	0.8	42.6	—	78.9
June	124.6	6.1	91.3	0.3	222.3	39.6	1.7	43.1	0.1	84.5
September	136.0	6.3	109.4	0.2	252.0	46.2	1.3	49.1	0.1	96.8
December	132.5	5.1	87.8	0.2	225.6	45.8	1.5	46.5	0.1	93.9
2000										
March	104.3	10.0	100.7	0.4	215.3	37.8	1.3	47.8	0.1	87.0
June	137.3	7.3	98.2	0.2	243.1	39.8	1.3	47.3	0.1	88.3

(a) Includes plywood, veneer and sliced timber production converted to an equivalent cubic measurement.

(b) Includes blackwood, myrtle, sassafras etc.

(c) Radiata pine.

(d) Includes Huon pine, celery top pine and King William pine.

Source: Unpublished data.

	Producing locations(b)	Materials used(c)		Chipped and ground wood production '000 tonnes green weight
		Logs delivered(d)	Sawmill offcuts	
		no.	'000 m ³	
1997-98	28	3 998.1	457.9	4 440.1
1998-99	29	3 459.6	373.4	3 929.9
1999-2000	30	4 526.8	452.5	5 145.3
1998				
June	28	1 048.0	120.9	1 118.3
September	29	872.5	87.3	981.5
December	29	798.3	112.0	889.5
1999				
March	29	862.9	79.2	997.7
June	29	925.9	94.9	1 061.1
September	30	1 056.8	134.1	r 1 225.3
December	30	r 1 103.8	96.4	1 207.3
2000				
March	30	1 152.1	r 104.6	1 308.7
June	30	1 214.1	117.4	1 404.0

(a) Both hardwoods and softwoods, separate details are not available.

(b) Capable of producing at end of year or actually producing during quarter.

(c) Data reported by weight, converted to cubic measure by the factor of 0.95 m³ per tonne.

(d) Includes log equivalent of limbwood and billets.

Source: Unpublished data.

26

LOGS DELIVERED FOR MILLING OR CHIPPING

	Sawmilling and plywood milling			Chipping and grinding(a)			Total		
	Crown land(b)	Private land	Total	Crown land(b)	Private land	Total	Crown land(b)	Private land	Total
	'000 m ³	'000 m ³	'000 m ³	'000 m ³	'000 m ³	'000 m ³	'000 m ³	'000 m ³	'000 m ³
1997-98	750.7	129.6	880.3	1 894.9	2 103.1	3 998.1	2 645.7	2 232.7	4 878.3
1998-99	754.2	121.2	875.4	1 562.6	1 897.0	3 459.6	2 316.7	2 018.2	4 334.9
1999-2000	834.4	101.6	935.9	2 440.5	2 086.3	4 526.8	3 274.9	2 187.8	5 462.7
1998									
June	191.2	29.4	220.6	478.5	569.5	1 048.0	669.7	598.9	1 268.6
September	188.3	34.3	222.7	341.0	531.5	872.5	529.4	565.8	1 095.2
December	185.5	33.4	218.9	422.4	375.9	798.3	607.9	409.3	1 017.2
1999									
March	184.1	27.3	211.4	367.0	495.8	862.9	551.1	523.2	1 074.3
June	196.2	26.1	222.3	432.1	493.8	925.9	628.3	519.9	1 148.2
September	221.8	30.2	252.0	554.0	502.7	1 056.8	775.8	532.9	1 308.7
December	202.5	23.1	225.6	643.1	r 460.7	r 1 103.8	845.6	r 483.8	r 1 329.4
2000									
March	192.1	23.2	215.3	585.3	566.9	1 152.1	777.3	590.1	1 367.4
June	218.0	25.1	243.1	658.1	555.9	1 214.1	876.1	581.0	1 457.1

(a) Logs used are generally below sawmilling standard: includes log equivalent of limbwood and billets.

(b) Comprises all areas (including concession areas) from which royalties are payable to Forestry Tasmania.

Source: Unpublished data.

							Value		
	Dwelling units				Alterations and additions to residential buildings(c)		Non-residential buildings		Total of all building
	New houses no.	New other residential buildings(a) no.	Other dwelling units created (conversions etc.)(b) no.	Total dwelling units no.			Private \$m	Total \$m	
1997-98	1 419	219	5	1 643	142.4	38.4	82.8	125.5	306.3
1998-99	1 297	104	9	1 410	131.2	36.8	115.8	174.6	342.6
1999-2000	1 608	230	55	1 893	193.4	50.7	120.7	160.6	404.7
1999									
July	147	9	2	158	15.2	3.8	15.3	18.7	37.6
August	101	16	1	118	11.8	3.9	8.2	10.2	25.8
September	115	4	—	119	11.9	3.3	23.1	23.3	38.5
October	142	19	—	161	15.6	4.2	8.8	9.8	29.7
November	155	26	2	183	15.7	4.0	4.3	6.2	25.8
December	160	20	—	180	18.4	2.6	8.2	13.1	34.1
2000									
January	139	28	13	180	21.2	4.3	5.8	6.4	31.9
February	135	33	0	168	16.4	4.3	20.7	21.4	42.2
March	149	14	3	166	17.5	4.1	7.0	9.8	31.4
April	122	12	2	136	13.8	3.9	2.3	8.0	25.7
May	159	45	29	233	25.8	8.0	10.7	17.1	50.8
June	84	4	3	91	10.3	4.2	6.4	16.7	31.2
July	83	—	1	84	7.9	2.6	4.3	7.3	17.7

(a) New individual dwelling units (e.g. flats, home units and villa units).

(b) From alterations and additions to residential building, conversions of non-residential building to residential building etc.

(c) Valued at \$10,000 and over. Includes conversions and dwelling units approved as part of alterations and additions or as part of the construction of non-residential building.

(d) Comprises non-residential building (new plus alterations and additions) valued at \$50,000 and over.

(e) Value data from July 2000 reference month onward are recorded inclusive of GST See Cat no. 8731.0 or page 2 of this publication for more details.

Source: Building Approvals, Australia (Cat. no. 8731.0).

28

SECURED HOUSING COMMITMENTS—ORIGINAL, SEASONALLY ADJUSTED AND TREND

	Total number of dwellings(a)			Total value of commitments(b)		
	Original	Seasonally adjusted	Trend	Original	Seasonally adjusted	Trend
	no.	no.	no.	\$m	\$m	\$m
1999						
July	806	828	846	67	69	68
August	859	848	859	68	66	67
September	888	857	870	69	64	68
October	869	929	872	67	70	68
November	923	930	856	76	74	68
December	774	772	829	67	67	68
2000						
January	634	751	802	53	62	67
February	850	859	794	71	72	67
March	880	753	817	73	63	68
April	751	782	864	61	66	70
May	1 135	1 018	923	87	77	73
June	946	943	985	71	77	76
July	1 070	1 127	1 040	78	80	79

(a) Includes new dwellings, established dwellings and refinancing. Excludes alterations and additions.

(b) Commitment is a firm offer of housing finance. It either has been, or is normally expected to be, accepted. Includes commitments to provide housing finance to employees and commitments accepted and cancelled in the same month. Excludes alterations and additions. Includes refinancing.

Source: *Housing Finance for Owner Occupation, Australia* (Cat. no. 5609.0).

29

PRIVATE NEW CAPITAL EXPENDITURE BY TYPE OF ASSET(a)(b)

	Buildings and structures	Equipment, plant and machinery	Total
	\$m	\$m	\$m
1997–98	169	477	646
1998–99	130	345	475
1999–2000	71	388	459
1998			
June	42	102	145
September	40	101	141
December	25	70	95
1999			
March	30	85	115
June	35	89	124
September	14	83	97
December	15	98	114
2000			
March	14	74	88
June	28	132	160

(a) Estimates based on a sample survey and therefore subject to sampling variability. Covers selected industries only—mining, manufacturing, finance, property and other selected industries.

(b) Current prices.

Source: *State Estimates of Private New Capital Expenditure*, (Cat. no. 5646.0.).

	<i>Deposits</i>				
	<i>Current bearing interest</i>	<i>Current not bearing interest</i>	<i>Fixed</i>	<i>Investment savings accounts</i>	<i>Statement savings accounts</i>
	\$m	\$m	\$m	\$m	\$m
1999					
July	775	248	1 964	616	273
August	783	246	1 992	614	278
September	796	243	2 006	610	280
October	819	249	2 015	608	279
November	850	252	1 951	604	281
December	870	269	1 602	599	283
2000					
January	861	260	1 098	599	283
February	862	260	1 039	595	282
March	878	276	1 106	593	283
April	863	282	1 113	587	284
May	1 088	268	1 108	429	249
June	1 241	274	1 108	299	226
July	1 250	264	1 202	275	228

	<i>Deposits</i>			<i>Loans(b)</i>
	<i>Passbook/school savings accounts</i>	<i>Other</i>	<i>Total</i>	
	\$m	\$m	\$m	
1999				
July	77	105	4 058	5 081
August	89	93	4 093	4 765
September	78	91	4 103	4 987
October	88	84	4 143	4 972
November	87	84	4 109	4 984
December	83	84	3 792	4 962
2000				
January	83	82	3 266	4 950
February	82	82	3 202	5 039
March	81	82	3 301	5 056
April	80	83	3 292	5 021
May	54	84	3 281	5 116
June	37	84	3 269	5 128
July	39	83	3 341	5 229

(a) Details are the averages of weekly figures for each month. The figures are derived from returns submitted by banks authorised under the Banking Act together with similar returns voluntarily submitted by the State banks; they exclude the Reserve Bank.

(b) Excludes non-resident loans.

Source: Reserve Bank of Australia.

	<i>Establish- ments</i>	<i>Guest rooms</i>	<i>Bed spaces</i>	<i>Persons employed</i>	<i>Room nights occupied</i>	<i>Room occupancy rate</i>	<i>Guest nights</i>	<i>Bed occupancy rate</i>	<i>Guest arrivals</i>	<i>Takings from accommodation</i>
	<i>no.</i>	<i>no.</i>	<i>no.</i>	<i>no.</i>	<i>'000</i>	<i>no.</i>	<i>'000</i>	<i>%</i>	<i>'000</i>	<i>\$'000</i>
LICENSED HOTELS WITH FACILITIES										
1999										
March qtr	54	2 898	7 935	2 848	168.8	64.7	274.7	38.5	159.0	14 215
2000										
January	n.a.	n.a.	n.a.	n.a.	51.2	56.4	94.6	37.8	51.7	4 545
February	n.a.	n.a.	n.a.	n.a.	59.5	70.0	97.2	41.5	54.3	5 245
March	n.a.	n.a.	n.a.	n.a.	62.1	69.0	100.5	40.5	58.3	5 394
March qtr	55	2 931	8 082	3 027	172.8	65.0	292.4	39.9	164.3	15 184
MOTELS AND GUEST HOUSES WITH FACILITIES										
1999										
March qtr	51	1 749	5 431	714	104.1	66.1	204.9	41.9	118.1	8 408
2000										
January	n.a.	n.a.	n.a.	n.a.	31.2	57.7	63.1	37.6	35.1	2 766
February	n.a.	n.a.	n.a.	n.a.	33.9	66.9	62.6	39.9	34.3	2 821
March	n.a.	n.a.	n.a.	n.a.	38.3	70.7	70.6	42.1	42.6	3 042
March qtr	51	1 747	5 415	754	103.4	65.0	196.3	39.8	112.0	8 629
SERVICED APARTMENTS										
1999										
March qtr	24	865	3 321	428	54.9	70.5	124.2	41.6	61.5	5 728
2000										
January	n.a.	n.a.	n.a.	n.a.	19.4	70.3	49.3	45.1	20.4	2 179
February	n.a.	n.a.	n.a.	n.a.	18.7	72.5	39.2	38.4	17.0	1 951
March	n.a.	n.a.	n.a.	n.a.	20.6	74.3	42.2	38.7	19.2	2 104
March qtr	25	892	3 523	439	58.8	72.4	130.8	40.8	56.6	6 233
TOTAL ESTABLISHMENTS										
1999										
March qtr	129	5 512	16 687	3 990	327.8	66.1	603.9	40.2	338.6	28 351
2000										
January	n.a.	n.a.	n.a.	n.a.	101.9	59.0	207.0	39.2	107.2	9 490
February	n.a.	n.a.	n.a.	n.a.	112.1	69.4	199.1	40.3	105.5	10 017
March	n.a.	n.a.	n.a.	n.a.	120.9	70.4	213.4	40.6	120.1	10 540
March qtr	131	5 570	17 020	4 220	334.9	66.2	619.4	40.1	332.8	30 046

(a) Comprising establishments with 15 or more rooms or units. For explanation of terms and concepts refer to Tourist Accommodation, Australia (Cat. no. 8635.0).

(b) For the four quarters of 2000, the scope of the Survey of Tourist Accommodation (STA) has been expanded. Over this period the following accommodation sectors will be covered: hotels, motels, guest houses and serviced apartments with 15 or more rooms; holiday flats, units and houses operated by owners, managers or real estate agents who have sole letting rights to at least 15 flats, units or houses for short term letting; caravan parks with 40 or more powered sites, cabins, etc; and visitor hostels with 25 or more bed spaces.

Source: Tourist Accommodation, Australia (Cat. no. 8635.0). For more detailed information, see Tourist Accommodation, Small Area Data, Tasmania (Cat. no. 8635.6.40.001).

<i>Tasmanian National Park attendance</i>							
	<i>Cradle Mountain(b) Lake Dove</i>	<i>Lake St Clair(b) (Cynthia Bay)</i>	<i>Freycinet(b)</i>	<i>Mt Field(b)</i>	<i>Narawntapu(c) (Bakers Beach)</i>	<i>Mole Creek Karst(d) Marakoopa Cave</i>	<i>Maria Island(e) (Darlington)</i>
	<i>no.</i>	<i>no.</i>	<i>no.</i>	<i>no.</i>	<i>no.</i>	<i>no.</i>	<i>no.</i>
1999–2000	200 700	111 600	p 308 500	130 700	33 200	29 460	13 213
1999							
August	7 200	2 700	9 500	6 800	1 500	1 449	436
September	14 600	6 000	14 800	7 800	1 800	2 193	1 002
October	15 300	8 700	18 200	9 200	2 800	2 080	1 070
November	16 600	10 600	25 600	9 800	2 600	2 837	1 060
December	22 500	10 300	32 600	14 620	4 700	4 049	1 305
2000							
January	33 100	19 400	48 200	22 100	6 400	4 320	2 315
February	22 300	14 400	33 400	16 400	3 700	2 591	1 617
March	21 800	15 000	p 31 700	13 500	3 300	2 750	1 642
April	23 000	13 100	p 44 000	14 000	2 600	3 225	1 615
May	8 300	5 500	p 21 700	5 600	1 100	1 350	603
June	8 600	3 300	p 17 400	6 000	1 400	1 576	526
July	6 600	r 2 800	p 5 500	5 200	1 000	1 023	62
August	7 600	2 600	p 5 900	6 300	1 200	1 140	313

(a) A 'person entry' occurs whenever a visitor enters a National Park. Measurement occurs at the designated sites in brackets.

(b) Estimated through a combination of traffic and booth counts.

(c) Estimated through traffic counts.

(d) Number of people taken on a guided tour.

(e) The sum of ferry arrivals and estimated plane passengers.

Source: Tasmanian Parks and Wildlife Service, Department of Primary Industries, Water and Environment.

	<i>Overland(b)</i>	<i>South Coast(c)</i>	<i>Freycinet(d)</i>	<i>Port Davey(c)</i>	<i>Frenchmans Cap</i>
	<i>no.</i>	<i>no.</i>	<i>no.</i>	<i>no.</i>	<i>no.</i>
1999–2000	7 339	1 011	2 784	272	807
1999					
August	28	3	119	—	16
September	144	10	114	2	24
October	215	16	196	1	22
November	727	56	251	10	37
December	1 440	227	386	99	113
2000					
January	1 518	328	587	75	218
February	1 209	173	335	34	161
March	1 309	p 133	317	p 26	110
April	704	p 60	282	p 25	58
May	111	p 2	39	p—	15
June	104	p 1	65	p—	20
July	p 33	n.y.a.	89	p 2	n.y.a.
August	p 55	n.y.a.	35	n.y.a.	n.y.a.

(a) Numbers include only walkers who registered and represented their intention.

(b) Sum of registrations at Cradle Mt and Lake St Clair.

(c) Sum of registrations to walk the length of the track in any direction, irrespective of starting point.

(d) All overnight walkers registered in the park.

Source: Tasmanian Parks and Wildlife Service, Department of Primary Industries, Water and Environment.

	Passenger vehicles	Other vehicles(b)	Total(excl. motor cycles)	Vehicles registered by vehicle rental businesses(c)	Motor cycles
	no.	no.	no.	no.	no.
1997-98	13 232	2 740	15 972	2 544	542
1998-99	12 359	2 786	15 145	1 771	568
1999-2000	11 373	3 183	14 556	2 093	563
1999					
July	1 059	290	1 349	171	53
August	1 026	244	1 270	235	29
September	1 240	218	1 458	470	42
October	885	245	1 130	138	65
November	964	292	1 256	151	49
December	1 626	273	1 899	835	58
2000					
January	748	204	952	59	29
February	782	210	992	1	52
March	888	240	1 128	10	44
April	704	233	937	19	41
May	786	340	1 126	3	74
June	665	394	1 059	1	27
July	1 001	204	1 205	81	47

(a) Includes State and Commonwealth Government owned motor vehicles and other than those belonging to the defence services. Excludes tractors, plant and equipment, caravans and trailers.

(b) Comprises utilities, panel vans, rigid and articulated trucks and other truck type vehicles (i.e. motor vehicles designed for purposes other than freight carrying, e.g. campervans, tow trucks, ambulances and hearses) and buses.

(c) These figures are included in previous columns.

Source: New Motor Vehicle Registrations, Australia (Cat. no. 9303.0.40.003) and unpublished data.

	Trend estimates(d)							Total(e)
	Original	Food retailing	Clothing and soft good retailing	Household good retailing	Recreational good retailing	Hospitality and services	Change from corresponding month of previous year	
	\$m	\$m	\$m	\$m	\$m	\$m	\$m	%
1997-98 r	3 149.4	1 350.9	186.0	321.6	215.2	434.2	3 150.8	..
1998-99 r	3 170.1	1 350.8	186.2	341.2	200.4	433.2	3 174.8	..
1999-2000	3 278.4	1 398.1	163.9	371.9	211.5	477.4	3 264.2	—
1999								
July	264.5	114.5	15.0	30.0	18.0	38.1	273.1	5.7
August r	259.3	116.6	14.6	31.1	17.2	39.2	275.3	6.7
September	263.7	116.6	14.8	31.1	17.9	37.9	274.0	5.7
October r	272.1	118.5	13.9	29.3	18.1	38.0	272.1	4.5
November r	279.0	118.4	13.5	29.1	17.7	39.7	272.2	4.4
December r	368.9	119.7	13.4	28.4	17.4	39.6	273.8	7.0
2000								
January r	260.9	115.7	13.5	31.6	18.3	41.8	269.8	0.8
February r	257.4	119.1	13.5	29.3	17.3	41.7	270.4	0.4
March r	272.8	118.2	12.7	30.3	16.9	43.0	270.8	-2.5
April r	256.8	114.8	12.2	32.2	17.8	40.2	269.2	0.2
May	258.2	113.1	12.8	31.8	17.4	39.5	266.9	-0.8
June	264.8	112.9	14.0	37.7	17.5	38.7	276.6	2.5
July	247.7	115.9	12.5	31.7	16.4	39.0	264.8	-3.0

(a) Excludes motor vehicles, parts, petrol, etc.

(b) For April 2000, changed frame maintenance procedures have resulted in an increase in the level of retail turnover, but the increases have been phased in so that current and historical month to month movements have been limited.

(c) Includes Department stores and Other retailing.

(d) Data from July 2000 reference month onwards are recorded inclusive of GST. The trend series on current price terms has been suspended as at June 2000. See Cat no. 8501.0 and page 2 of this publication for more details.

Source: Retail Trade, Australia (Cat. no. 8501.0).

	Tasmania				Australia			
	Imports	Imports change over preceding period	Exports	Exports change over preceding period	Imports	Imports change over preceding period	Exports(b)	Exports change over preceding period
		%		%		%		%
	\$m		\$m		\$m		\$m	
1997-98	385	-3	2 136	25	90 684	15	87 768	11
1998-99	407	6	2 019	r -6	97 611	8	r 85 991	-2
1999-2000	440	8	r 2 214	10	110 234	13	r 97 262	13
1999								
July	39	75	159	-35	8 181	0	7 158	4
August	32	-19	150	-5	8 871	8	r 7 347	3
September	43	r 35	115	-23	8 965	1	7 392	1
October	32	-26	222	93	10 216	14	7 987	8
November	33	4	155	-30	9 701	-5	8 470	6
December	31	-6	165	7	8 922	-8	r 8 369	-1
2000								
January	35	12	231	40	8 110	-9	r 6 829	r -18
February	35	-1	r 185	-20	8 659	7	8 231	21
March	36	3	198	7	9 653	12	r 8 813	7
April	33	-7	172	-13	8 013	-17	r 8 272	-6
May	58	73	287	67	10 452	30	r 9 203	11
June	33	-44	r 175	r 39	10 490	0	r 9 190	0
July	47	44	163	-7	9 814	-6	9 369	2

(a) It is difficult to get a complete picture of Tasmania's trade performance as imports recorded by the ABS include only goods imported directly into the State from overseas, and reported by the Australian Customs Service. Many of Tasmania's goods imported for direct consumption, or input into further processing industries, arrive via interstate ports, and are not included in this table.

(b) Includes re-exports

	European Community				East Asia				Total all countries
	United States of America	United Kingdom	Total European Community	Japan	Korea	Taiwan	Hong Kong	ASEAN(a)	
	\$'000	\$'000	\$'000	\$'000	\$'000	\$'000	\$'000	\$'000	
1997-98	176 175	25 063	338 791	549 048	67 801	150 405	132 551	399 472	2 136 171
1998-99	235 787	28 691	278 037	466 626	101 177	150 071	152 533	353 441	2 019 182
1999-2000	202 774	r 19 009	r 308 860	r 489 037	r 133 562	r 207 100	r 201 325	r 383 456	r 2 214 098
1999									
July	25 199	2 834	14 114	25 878	9 485	13 917	17 716	31 017	158 655
August	13 943	792	r 5 108	41 207	7 389	16 731	18 708	25 769	150 059
September	11 467	916	6 846	28 486	7 093	14 051	9 514	19 719	115 078
October	15 629	3 384	82 623	45 827	8 844	12 201	9 066	24 584	222 321
November	8 367	1 141	6 210	40 317	12 089	15 738	13 761	32 597	155 142
December	14 110	364	6 495	40 126	13 507	14 772	17 715	28 969	165 338
2000									
January	15 158	1 214	76 008	37 408	9 180	16 485	17 086	29 980	230 891
February	21 256	923	11 232	r 48 466	r 13 507	18 177	20 529	32 952	r 185 180
March	14 953	1 559	12 228	37 558	14 667	17 750	22 177	r 47 903	r 198 177
April	20 607	2 088	9 102	41 176	r 10 164	19 499	18 893	32 548	r 171 689
May	22 716	1 698	71 392	r 53 804	r 17 804	r 29 470	r 18 987	r 41 285	r 286 751
June	19 369	r 2 096	r 7 502	r 48 785	r 9 834	r 18 310	r 17 173	r 36 133	r 174 817
July	15 365	4 472	9 142	37 125	9 268	12 672	21 229	27 408	163 157

(a) ASEAN member countries are: Brunei, Indonesia, Laos, Malaysia, Myanmar, Philippines, Singapore, Thailand and Viet Nam.

	<i>Meat and meat preparations</i>	<i>Dairy products</i>	<i>Fish, crustaceans and molluscs</i>	<i>Vegetables and fruit</i>	<i>Wood and woodchips</i>	<i>Textile fibres and wastes</i>	<i>Metallic ores and metal scrap</i>
	\$'000	\$'000	\$'000	\$'000	\$'000	\$'000	\$'000
1997-98	71 918	133 675	141 205	55 242	311 359	29 641	254 054
1998-99	65 026	102 709	136 268	54 907	296 164	24 999	278 001
1999-2000	r 88 182	r 64 571	r 145 484	r 44 629	304 032	22 358	r 243 021
1999							
July	6 603	3 421	14 166	3 718	17 037	1 538	19 287
August	5 650	3 053	13 590	2 568	31 991	891	15 297
September	5 008	2 503	14 468	1 397	19 172	2 051	12 218
October	5 330	4 256	9 240	446	27 681	1 111	23 997
November	5 977	4 494	12 774	442	24 706	1 604	29 618
December	7 307	3 723	16 011	422	23 389	3 913	28 970
2000							
January	6 296	7 366	11 677	754	32 062	1 460	21 084
February	r 8 375	5 680	11 507	3 066	32 381	1 812	14 065
March	9 595	7 726	r 12 692	8 108	r 31 878	4 519	19 171
April	8 834	r 6 552	r 9 400	10 282	r 35 607	1 772	11 029
May	11 354	9 217	13 722	r 9 063	r 32 315	592	26 793
June	r 7 854	6 580	6 236	r 4 364	r 1 327	1 094	r 21 492
July	6 033	7 290	15 602	4 212	3 911	1 363	20 612
	<i>Medical and pharmaceutical products</i>	<i>Paper and paperboard</i>	<i>Iron and steel</i>	<i>Non-ferrous metals</i>	<i>Road vehicles and transport equipment</i>	<i>Other and combined confidential items</i>	<i>Total all commodity groups</i>
	\$'000	\$'000	\$'000	\$'000	\$'000	\$'000	\$'000
1997-98	34 755	21 222	76 463	557 126	280 251	169 261	2 136 171
1998-99	52 330	4 130	95 265	544 311	173 015	192 057	2 019 182
1999-2000	67 353	9 187	10 195	r 681 872	213 836	r 319 996	r 2 214 098
1999							
July	5 303	163	5 418	64 893	58	17 051	158 655
August	7 100	405	75	49 879	495	19 065	150 059
September	4 096	62	61	37 870	1 008	15 165	115 078
October	4 963	223	r 200	44 314	70 784	29 776	222 321
November	5 153	972	60	52 096	r 276	16 968	155 142
December	2 146	1 316	2 156	r 51 888	50	24 046	165 336
2000							
January	3 367	535	169	55 551	72 222	18 347	230 891
February	6 425	1 704	178	68 007	636	31 846	r 185 180
March	8 343	1 391	r 321	74 371	1 333	24 418	r 198 177
April	8 133	711	100	55 293	1 520	22 397	r 171 689
May	6 711	1 295	694	r 63 631	64 934	r 46 430	r 286 751
June	5 613	410	r 761	r 64 078	521	r 54 486	r 174 817
July	7 800	150	458	47 127	251	48 346	163 157

	NSW	Vic.	Qld	SA	WA	Tas.	Aust.(a)
Population							
Estimated resident population, September 1999 ('000) p	6 451.7	4 741.5	3 539.5	1 495.8	1 873.8	469.9	19 080.8
Proportion of Australian population, September 1999 (%) p	33.8	24.8	18.6	7.8	9.8	2.5	100.0
Population growth rate, 12 months to September 1999 (%) p	1.2	1.2	1.6	0.4	1.5	-0.2	1.2
Labour force							
Employment growth, 12 months to August 2000 (trend series) (%)							
Males	2.6	2.9	2.8	2.6	2.2	0.1	2.6
Females	6.3	5.2	4.1	2.1	2.1	3.4	4.6
Persons	4.2	3.9	3.4	2.4	2.1	1.5	3.5
Unemployment rate (trend series), August 2000 (%)	5.5	6.3	7.6	7.8	6.2	9.5	6.4
Unemployment growth, 12 months to August 2000 (trend series) (%)	-11.5	-11.6	-3.8	-4.8	-5.6	5.0	-8.0
Participation rate (trend series), August 2000 (%)	62.9	63.9	65.5	61.2	66.3	59.5	63.9
Job vacancy rate, May 2000 (%)	1.7	1.5	1.2	1.0	1.1	0.8	1.4
Working days lost through industrial disputes, 12 months to June 2000 (days per '000 employees)	148	120	61	41	87	6	104
Wages and prices							
Average weekly total earnings, full-time adult employees (trend series) May 2000 (\$)							
Males	944.3	851.2	819.8	831.9	922.5	819.6	886.9
Females	738.7	719.6	662.6	669.2	688.9	662.9	713.2
Persons	865.6	804.8	761.4	772.1	837.0	765.1	821.7
Average weekly total earnings full-time adult employees, growth (trend), 12 months to May '00 (%)	4.1	3.6	3.5	3.8	5.5	4.5	4.2
Consumer price index, all groups, annual growth to June qtr 2000 (%) (b)	3.3	3.4	2.7	3.2	2.6	3.3	3.2
Building							
% change in the number of total dwelling units approved (original) in the 12 months ended July 2000, over the same period previous year	-7.8	21.7	11.3	24.3	4.5	25.6	7.1
July 1999 to July 2000	-54.3	-13.8	-36.8	-15.7	-45.5	-46.8	-36.8
For footnotes see end of table.							...continued

	NSW	Vic.	Qld	SA	WA	Tas.	Aust.(a)
Private investment and retail trade							
% change in private new capital expenditure, 12 months ended March 1999, over the same period previous year (original)	-3.6	-3.6	-5.2	-12.2	-31.7	-14.9	-10.4
% change in seasonally adjusted estimates turnover of retail establishments, July 2000 (change from corresponding month of the previous year)	1.4	-4.9	4.9	-0.3	1.1	-3.0	0.3
Transport							
% change in number of new motor vehicles (excluding motorcycles) registered in the 12 months ended July 2000, over the same period previous year	-3.9	-3.1	-8.6	-8.7	-10.6	-3.9	-5.5
Agriculture							
% change in the number of livestock slaughtered 12 months ended July 2000 over the same period previous year (original)							
Cattle and calves	-8.3	-10.0	1.0	8.0	-8.6	5.7	-4.3
Sheep and lambs	-0.2	13.1	7.8	-6.5	3.0	10.9	4.5
Tourism—room occupancy rates							
Hotels, motels & guest houses, & serviced apartments with facilities, March quarter 1999 (%)	60.3	62.3	54.7	58.0	54.5	66.2	58.2
Australian National and State Accounts							
% change in Domestic (State) Final Demand(c), Chain Volume measures (trend series)							
Mar qtr 2000 to Jun qtr 2000	0.9	1.1	1.0	1.0	-0.1	1.5	1.0
Jun qtr 1999 to Jun qtr 2000	4.9	5.0	6.0	5.9	1.1	5.3	4.5
(a) Australian totals include the ACT and NT, with the exception of Agriculture, which excludes both.							
(b) CPI applies to State capitals.							
(c) Total of four types of expenditure: Private investment, Private consumption, Government investment, Government consumption.							

	<i>Unit</i>	<i>Greater Hobart and Southern Statistical Divisions</i>	<i>Northern Statistical Division</i>	<i>Mersey-Lyell Statistical Division</i>	<i>Tasmania</i>
Area, at 30 June 1996	km ²	25 521	19 935	22 507	67 964
Population					
Estimated resident population, 30 June 1996	no.	230 187	134 047	110 209	474 443
Estimated resident population, 30 June 1999	no.	228 855	133 016	108 390	470 261
Births 1998(a)	no.	2 828	1 621	1 515	5 974
Deaths 1998(a)	no.	1 798	975	823	3 596
Labour force (original), August 2000					
Total employed	no.	96 700	58 000	42 000	196 700
Total unemployed	no.	10 900	5 600	5 300	21 800
Unemployment rate	%	10.1	8.8	11.1	10.0
Participation rate	%	59.3	59.2	57.5	58.9
Schools. 1999(b)					
Government	no.	100	57	59	216
Non-government	no.	32	17	16	65
School students, 1999(b)(c)					
Government					
Males	no.	15 529.8	9 254.0	7 867.3	32 651.1
Females	no.	14 785.4	9 291.5	7 650.5	31 727.4
Total	no.	30 315.2	18 545.5	15 517.8	64 378.5
Non-government					
Males	no.	5 866.0	2 474	2 047	10 387.4
Females	no.	6 170.8	2 375.1	1 979.7	10 525.6
Total	no.	12 036.8	4 849.1	4 027.1	20 913.0
Educational qualification, 1996 Census(d)					
Bachelor degree or higher(e)	no.	17 058	7 152	3 908	28 184
Undergraduate diploma	no.	5 893	3 268	2 181	11 374
Associate diploma	no.	3 773	1 902	1 466	7 184
Skilled vocational	no.	16 255	10 040	8 841	35 238
Basic vocational	no.	4 548	2 632	2 305	9 515
Agriculture					
Establishments with agricultural activity, 1998–99 season	no.	1 129	1 583	1 734	4 446
Total area of establishments	ha.	744 493	855 423	327 938	1 927 854
Crops, production, 1998–99 season					
Potatoes	tonnes	7 019	135 661	184 802	327 482
Onions	tonnes	949	13 527	45 996	60 471
Apples	tonnes	46 296	4 847	11 128	62 271
Barley	tonnes	8 180	19 327	2 537	30 044
Livestock, 1998–99 season					
Beef cattle	no.	77 760	191 042	222 641	491 443
Dairy cattle	no.	7 307	84 985	140 630	232 922
Sheep and lambs	no.	1 664 194	1 958 201	178 740	3 801 135
Pigs	no.	2 796	13 289	5 821	21 906
Gross value of agricultural production, 1998–99 prel.	\$m	n.y.a.	n.y.a.	n.y.a.	699
For footnotes see end of table.					...continued

	<i>Unit</i>	<i>Greater Hobart and Southern Statistical Divisions</i>	<i>Northern Statistical Division</i>	<i>Mersey-Lyell Statistical Division</i>	<i>Tasmania</i>
Business locations, September 1998					
Locations with manufacturing activity					
Less than 20 employees	no.	424	327	257	1 008
20 or more employees	no.	83	67	48	198
Total	no.	507	394	305	1 206
Locations with retail activity					
Less than 20 employees	no.	2 046	1 346	1 133	4 525
20 or more employees	no.	82	43	35	160
Total	no.	2 128	1 389	1 168	4 685
Building, 1998–99					
Total dwelling units approved	no.	731	431	248	1 410
Value of total residential building approved	\$'000	87 612	50 579	29 843	168 035
Value of total building approved	\$'000	199 614	83 883	59 083	342 580
Dwellings, Census 1996(d)					
Total dwellings	no.	98 815	57 467	45 529	201 820
Occupied private dwellings	no.	85 255	49 759	40 183	175 197
Fully owned	no.	34 338	21 563	18 359	74 260

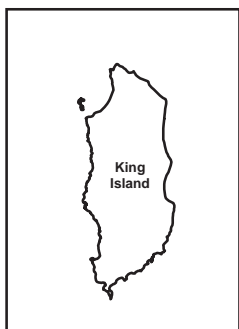
(a) Births and deaths are based on usual residence year of registration. Total Tasmania includes usual residences other than Tasmanian Statistical Divisions.

(b) Source: DETYA and Tasmanian Department of Education.

(c) Full-time equivalent.

(d) Total includes migratory statistical division.

(e) Includes higher degree, postgraduate diploma and bachelor degree.



Statistical Divisions

Statistical Division **NORTHERN**
 Local Government Area **Dorset**



Based on ASGC 1996
 Prepared by: Demography Section, ABS Hobart
 © Commonwealth of Australia, 1998

FOR MORE INFORMATION...

- INTERNET** www.abs.gov.au the ABS web site is the best place to start for access to summary data from our latest publications, information about the ABS, advice about upcoming releases, our catalogue, and Australia Now—a statistical profile.
- LIBRARY** A range of ABS publications is available from public and tertiary libraries Australia-wide. Contact your nearest library to determine whether it has the ABS statistics you require, or visit our web site for a list of libraries.
- CPI INFOLINE** For current and historical Consumer Price Index data, call 1902 981 074 (call cost 77c per minute).
- DIAL-A-STATISTIC** For the latest figures for National Accounts, Balance of Payments, Labour Force, Average Weekly Earnings, Estimated Resident Population and the Consumer Price Index call 1900 986 400 (call cost 77c per minute).

INFORMATION SERVICE

Data which have been published and can be provided within five minutes are free of charge. Our information consultants can also help you to access the full range of ABS information—ABS user-pays services can be tailored to your needs, time frame and budget. Publications may be purchased. Specialists are on hand to help you with analytical or methodological advice.

- PHONE** **1300 135 070**
- EMAIL** **client.services@abs.gov.au**
- FAX** 1300 135 211
- POST** Client Services, ABS, GPO Box 796, Sydney 1041

WHY NOT SUBSCRIBE?

ABS subscription services provide regular, convenient and prompt deliveries of ABS publications and products as they are released. Email delivery of monthly and quarterly publications is available.

- PHONE** 1300 366 323
- EMAIL** subscriptions@abs.gov.au
- FAX** 03 9615 7848
- POST** Subscription Services, ABS, GPO Box 2796Y, Melbourne 3001



2130360010000
ISSN 1034-1803

RRP \$19.50